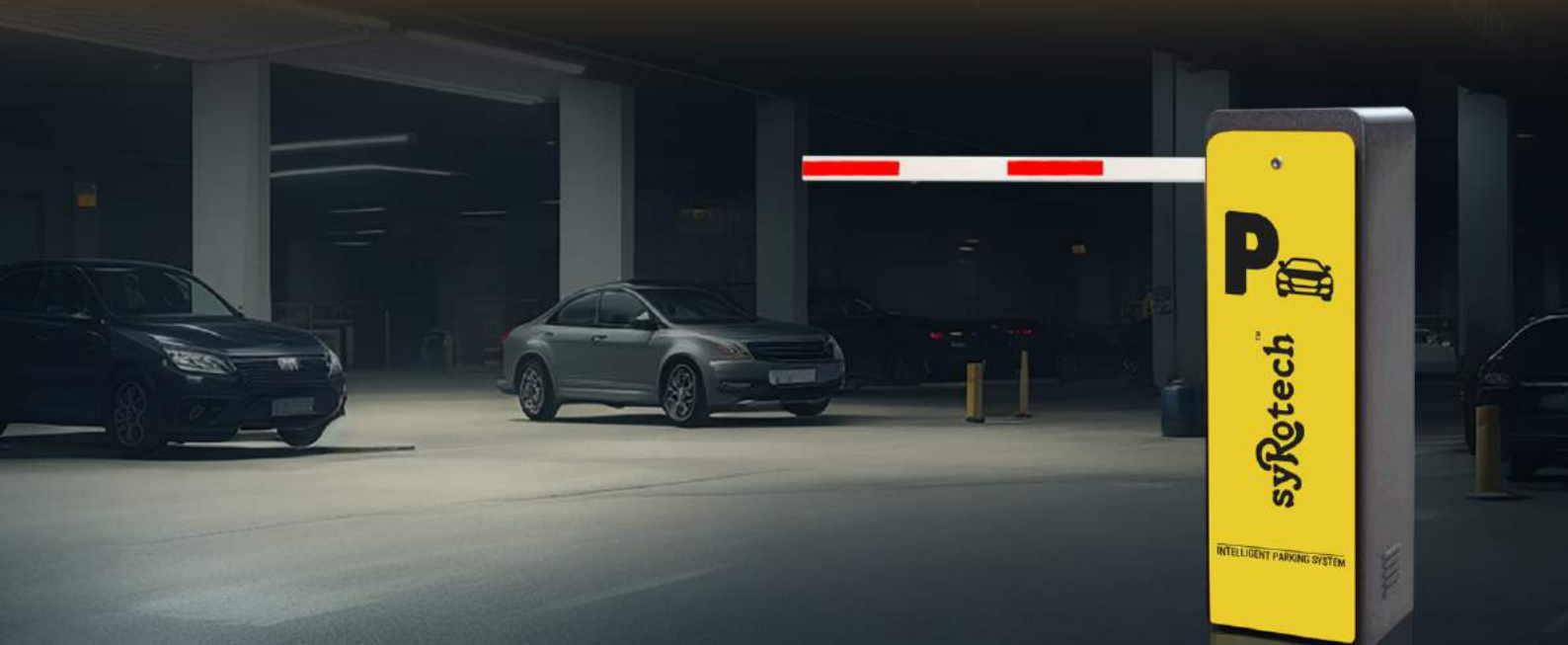




## SURVEILLANCE & ENTRANCE AUTOMATION



SECURITY



ENTRANCE



RFID CARD



UHF READER



ACCESS CONTROL

## ABOUT US

Syrotech Networks is a leading technological brand established by GO IP Global Services Pvt. Ltd. With over 30 years of experience, we have specialized in design, development, and manufacturing of Security products, FTTx, Datacom, and Networking . Our goal is to carve India's name globally in the Fiber & Security industry with high-quality and reliable yet affordable products.

We currently manufacture a wide portfolio of products including CCTV surveillance (CCTV Cameras - IP/AHD/PTZ/ANPR) and Entrance Security (Toll Barriers, Boom Barriers, Turnstiles etc) and Active & Passive PON products, optical Transceivers (SFP, SFP+, QSFP28 and more) Backed up by a Team of 1000+ highly skilled R&D and production team.

We aim to manufacture high quality robust, reliable and cost effective indigenous products. Our wide range of CCTV cameras and video recorders are designed, developed and tested in our labs to ensure 100% safety and security to our customers encompassing new age tech features like AI, 4K colour view night vision etc.

We take immense pride in delivering thousands of CCTV cameras across India deployed in Homes, Workplace, Hotels and Hospitals providing surveillance 24\*7 all round the clock.

Our Entrance solutions have been successfully implemented throughout India in Toll Plazas, Malls, Hotels, Hospitals, Residential Areas, Multi-Level Parking and Metro Stations. We are currently providing customised entrance security products such as Toll barriers, Parking barriers, Turnstiles, Parking Ticket Dispensers, UHF readers, RFID cards etc. to number of companies.

Our products are ISO 9001:2015 and 14001:2015 certified and meet all industry MSA standards, BIS, FCC, CE, WEE and ROHS standards.

We are able to respond quickly to customer needs, to provide them with stable compatibility, customisation, competitive products & design service.

## MISSION

Our mission is to serve our customers with the highest level of customer satisfaction, providing price competitive products developed and delivered on time by our innovative, talented, dedicated and empowered workforce.



# Our Product Portfolio



Security



Wireless



Datacom



Entrance



Networking

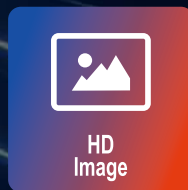
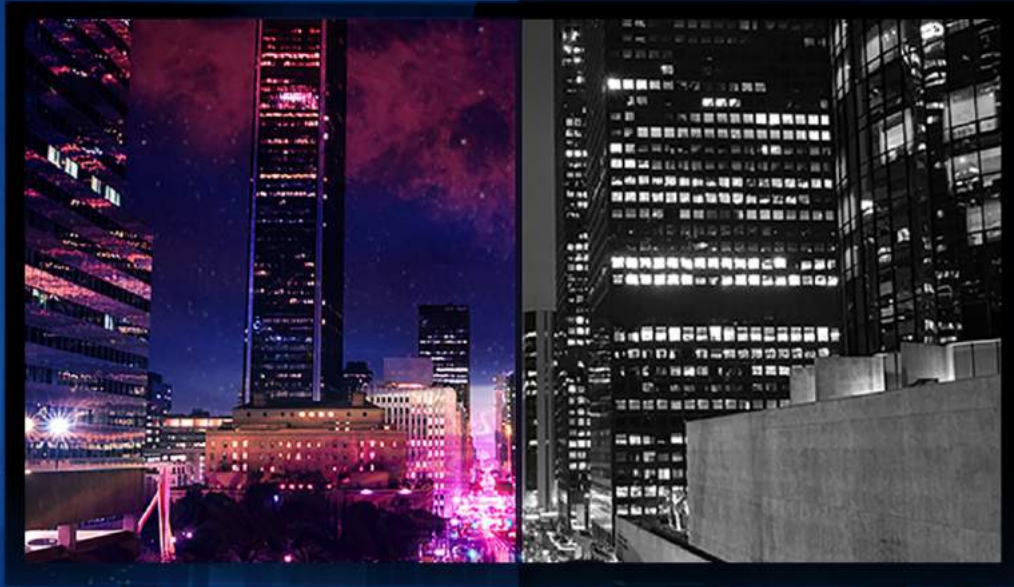


FTTx

# Full Color IPC

# Traditional IPC

Colorful images bring a different experience



# TRUE NIGHT VISION IP CAMERA

## 2MP IP Dome/Bullet Camera



### SY-2M-DIP

2MP IP 1080P True Night vision 1/3" Progressive Scan CMOS Sensor, Auto: 1/3-1/100000Sec, H.264/H.265/JPEG/AVI/MJPEG, 3.6 mm, horizontal FOV 78°, vertical FOV 41.8°, diagonal FOV 95.4°, 42μ x 2PCS 25M IR Distance, Built-in MIC, Plastic Housing.



### SY-2M-BIP

2MP IP 1080P True Night vision, 1/3" Progressive Scan CMOS Sensor, Auto: 1/3-1/100000Sec, H.264/H.265/JPEG/AVI/MJPEG, 3.6 mm, horizontal FOV 78°, vertical FOV 41.8°, diagonal FOV 95.4°, 42μ x 2PCS 25M IR Distance, Built-in MIC, Plastic, IP66 Housing.

## 4MP IP Dome/Bullet Camera



### SY-4M-DIP

4MP IP 2560(H)\*1440(V) True Night vision, 1/3" Progressive Scan CMOS Sensor, Auto: 1/3-1/100000Sec, H.264/H.265/JPEG/AVI/MJPEG, 3.6 mm, horizontal FOV 78°, vertical FOV 41.8°, diagonal FOV 95.4°, 42μ x 2PCS 25M IR Distance, Built-in MIC, Plastic Housing.



### SY-4M-BIP

4MP IP 2560(H)\*1440(V) True Night vision, 1/3" Progressive Scan CMOS Sensor, Auto: 1/3-1/100000Sec, H.264/H.265/JPEG/AVI/MJPEG, 3.6 mm, horizontal FOV 78°, vertical FOV 41.8°, diagonal FOV 95.4°, 42μ x 2PCS 25M IR Distance, Front Cover: Metal, Back Cover: Plastic, IP67 Housing.

# FULL COLOR IP CCTV CAMERA

## 2MP IP Full Color Dome/Bullet Camera



### SY-2M-DM-IPC

2MP IP 1080P Full Color View, 1/2.9" Progressive Scan CMOS Sensor, Auto: 1/3-1/100000Sec, H.264/H.264+/H.265/H.265+/JPEG/AVI/MJPEG, 3.6 mm, horizontal FOV 84°, vertical FOV 43°, diagonal FOV 100°, Warm light LED 4000K, up to 25m, 1 Built-in MIC, Metal IP67 Housing.



### SY-2M-BM-IPC

2MP IP 1080P Full Color View, 1/2.9" Progressive Scan CMOS Sensor, Auto: 1/3-1/100000Sec, H.264/H.264+/H.265/H.265+/JPEG/AVI/MJPEG, 3.6 mm, horizontal FOV 84°, vertical FOV 43°, diagonal FOV 100°, Warm light LED 4000K, up to 25m, 1 Built-in MIC, Metal, IP67 Housing.

## 4MP IP Full Color Dome/Bullet Camera



### SY-4M-DM-IPC

4MP IP 2560(H)\*1440(V) Full Color View, 1/3" Progressive Scan CMOS Sensor, Auto: 1/3-1/100000Sec, H.264/H.264+/H.265/H.265+/JPEG/AVI/MJPEG, 3.6 mm, horizontal FOV 81°, vertical FOV 41°, diagonal FOV 96°, Warm light LED 4000K, up to 25m, Built-in MIC, Metal IP67 Housing.



### SY-4M-BM-IPC

4MP IP 2560(H)\*1440(V) Full Color View, 1/3" Progressive Scan CMOS Sensor, Auto: 1/3-1/100000Sec, H.264/H.264+/H.265/H.265+/JPEG/AVI/MJPEG, 3.6 mm, horizontal FOV 81°, vertical FOV 41°, diagonal FOV 96°, Warm light LED 4000K, up to 25m, Built-in MIC, Metal IP67 Housing.

## 8MP IP Full Color Dome/Bullet Camera



### SY-8M-DM-IPC

8MP IP 3864(H)\*2192(V) Full Color View, 1/2.8" SONY Starvis Back-illuminated CMOS sensor, Auto: 1/3-1/100000Sec, H.264/H.265/H.264+/H.265+/JPEG/AVI, 3.6 mm, horizontal FOV 84°, vertical FOV 45°, diagonal FOV 100°, Warm light LED 4000K, up to 25m, Built-in MIC, Metal IP67 Housing.



### SY-8M-BM-IPC

8MP IP 3864(H)\*2192(V) Full Color View, 1/2.8" SONY Starvis Back-illuminated CMOS sensor, Auto: 1/3-1/100000Sec, H.264/H.265/H.264+/H.265+/JPEG/AVI, 3.6 mm, horizontal FOV 84°, vertical FOV 45°, diagonal FOV 100°, Warm light LED 4000K, up to 25m, Built-in MIC, Metal IP67 Housing.

# TRUE NIGHT VISION AHD CAMERA



## SY-2M-DHD

2MP True Night vision AHD 2M:1920\*1080, 1/3" CMOS Sensor, 3.6mm Fixed Lens, 14μ x 18PCS 20M IR Distance , Plastic Housing.



## SY-2M-BHD

2MP True Night vision AHD 1920\*1080, 1/3" CMOS Sensor, 3.6mm Fixed Lens, 14μ x 18PCS 20M IR Distance, Plastic IP 66 Housing.



## SY-5M-DHD

5MP True Night vision AHD 5M:2592\*1944 4M:2560\*1440 2M:1920\*1080, 1/2.5" CMOS sensor;3.6mm Fixed Lens, 14μ x 18PCS 20M IR Distance, Plastic Housing.



## SY-5M-BHD

5MP True Night vision AHD 5M:2592\*1944 4M:2560\*1440 2M:1920\*1080, 1/2.5" CMOS sensor;3.6mm Fixed Lens, 14μ x 18PCS 20M IR Distance, Plastic IP66 Housing

# FULL COLOR AHD CAMERA



## SY-2M-DHDC

2MP Full Color View AHD 2M:1920\*1080, 1/3" CMOS Sensor, 3.6mm Fixed Lens, Warm white (4000K) 25m IR Distance, Coaxial Audio (only TVI Mode), Eyeball: Metal Cover&Base: Plastic, IP65 Housing.



## SY-2M-BHDC

2MP Full Color View AHD 2M:1920\*1080, 1/3" CMOS Sensor, 3.6mm Fixed Lens, Warm white (4000K) 25m IR Distance, Coaxial Audio (only TVI Mode), Eyeball: Metal Cover&Base: Plastic, IP65 Housing.



## SY-5M-DHDC

5MP Full Color View AHD 5M:2592\*1944 4M:2560\*1440 2M:1920\*1080, 1/2.5" CMOS sensor, 3.6mm Fixed Lens, Warm white (4000K) 25m IR Distance, Coaxial Audio (only TVI Mode), Eyeball: Metal Cover&Base: Plastic, IP65 Housing.



## SY-5M-BHDC

5MP Full Color View AHD 5M:2592\*1944 4M:2560\*1440 2M:1920\*1080, 1/2.5" CMOS sensor, 3.6mm Fixed Lens, Warm white (4000K) 25m IR Distance, Coaxial Audio (only TVI Mode), Eyeball: Metal Cover&Base: Plastic, IP65 Housing.



# PROJECT SERIES IP CCTV CAMERA

## 3MP IP Dome Camera



### **SY-3M-DVF**

3MP Metal Motorized Zoom Varifocal AF IP Dome Camera, 5X AF Lens 2.7-13.5mm.

### **SY-3M-DVF-SDA**

3MP Metal Motorized Zoom Varifocal AF IP Dome Camera, 5X AF Lens 2.7-13.5mm with SD Card slot and Audio.



### **SY-3M-D-AI**

3MP Metal Fixed Dome IP Camera, 3.6mm Lens, AI Camera support Smart Analytics: Human/Face Detection, Intrusion Detection.

## 3MP IP Bullet Camera



### **SY-3M-BVF**

3MP Metal Motorized Zoom Varifocal AF IP Bullet Camera, 5X AF Lens 2.7-13.5mm.



### **SY-3M-B-AI**

3MP Metal Fixed Bullet IP Camera, 3.6mm Lens, AI Camera support Smart Analytics: Human/Face Detection, Intrusion Detection.

# IP CCTV CAMERA

## 5MP IP Dome Camera



### SY-5M-DVF

5MP Metal Motorized Zoom Varifocal  
AF IP Dome Camera, 5X AF Lens 2.7-13.5mm.



### SY-5M-D-AI

5MP Metal Fixed Dome IP Camera,  
3.6mm Lens, AI Camera support  
Smart Analytics: Human/Face Detection,  
Intrusion Detection.

## 5MP IP Bullet Camera



### SY-5M-BVF

5MP Metal Motorized Zoom Varifocal  
AF IP Bullet Camera, 5X AF Lens 2.7-13.5mm



### SY-5M-B-AI

5MP Metal Fixed Bullet IP Camera,  
3.6mm Lens, AI Camera support  
Smart Analytics: Human/Face Detection,  
Intrusion Detection.

## PTZ IP Camera



### SY-2MP-SSD-25x

2MP HD-IP IR 150M  
IR PTZ Camera  
Resolution : 2MP(1920x1080)  
25X , f=4.8mm~120mm  
Power : DC12V



### SY-5MP-SSD-30x

5MP HD-IP IR 100M  
IR PTZ Camera  
Resolution : 5MP(2592X1944)  
30X , f=4.6mm~167mm  
Power : DC12V



# Automatic Number Plate Recognition Camera

IND **DL XX U XXXX**

RESULTS: DL XX U XXXX  
GPS: 47.452424, 18.959000  
SPEED: 0-70km/h

## SY-30B-2M

2MP, Capture Speed Range 0~70km/h  
Image Sensor: 1/2.8" CMOS, Electronic Shutter: 1/25 s ~ 1/1000000s,  
Lens: 2.8~12mm@F1.4, motorized and 7~22mm@F1.6, motorized,  
Wide Dynamic Range: 120dB, Smart H.265 / H.265+/H.265/Smart  
H.264/H.264+/H.264/MJPEG60Hz : 1080P/720P(1~30fps);  
HFR Mode: 1080P/720P (60Hz: 1~60fps; 50Hz: 1~50fps)  
50Hz : 1080P/720P(1~25fps), Intelligent Analytics Video tampering  
detection, scene change detection, license plate recognition,  
Snapshot Overview and cutout of plate for picture,  
White List 10000, Power Supply DC12V/PoE

## SY-30B-4M

2MP, Capture Speed Range 0~70km/h  
Image Sensor 1 / 1.79" CMOS, Electronic Shutter 1/3 s ~ 1 / 10000  
s, Min. Illumination 0.007 lux@F1.4, AGC ON; 0 lux with IR, Lens  
8~32mm@F1.7, motorized, Wide  
Dynamic Range 120dB, Video Compression Main stream: Smart H.265 /  
H.265+ / H.265 / Smart H.264 / H.264+ / H.264 Sub stream: H.265+ /  
H.265 / H.264+ / H.264 / MJPEG Third stream: H.265+ / H.265 / H.264+ /  
H.264 / MJPEG, Main Stream 4MP/2K/3MP/1080P / 720P (60Hz : 1 ~  
30fps; 50Hz: 1~25fps) HFR mode: 1080P / 720P (60Hz : 1 ~ 60fps; 50Hz:  
1~50fps), RS 485 Yes, Audio 1CH audio input; 1CH audio output, Alarm  
1CH alarm input; 1CH alarm output, Storage Built-in micro SD card slot; up  
to 256GB, Line crossing, region entrance/exiting/intrusion (human/motor  
vehicle/ non-motor vehicle classification), Target counting by line/ area,  
heat map, Face detection, face capture, face match, License  
Plate Detection Yes, Power Supply DC12V/PoE



AUTO WB



DAY & NIGHT



IR DISTANCE  
50~70 m



BLC



WDR



DEFOG



HD



WEATHER  
PROOF



POE



H.265



HLC



-30° - 60°

# Dual Band Wireless Indoor Camera



## 4MP Color View Camera

- Image Sensor : 4MP 1/2.9" CMOS
- LENS : 4mm @F2.0
- Wi-Fi : 2.4Ghz + 5.0Ghz
- PTZ angle : Horizontal 356°, Vertical 150°
- Field of View (FOV) : Horizontal 77°, Vertical 44°, Diagonal 94°
- Day & Night : Automatic IR Cut filter
- Resolution : 2560\*1440 pixel
- Video Compression Rate : FHD / HD / SD
- Wi-Fi standard : IEEE802.11a/b/g/n
- Frequency range : 2.4Ghz + 5Ghz
- Night Vision Mode : IR Mode, White light mode, Smart mode
- AI Detection type : Motion Detection , Human Figure Detection, Human Figure Tracking, Sound Detection, Face Detection, Cry detection, Alarm type : White light alarm
- Storage : Micro SD(256G max)
- Audio : Two-way audio



Crying Detection



Face Detection



Figure Detection



Human Detection



Siren Alarm



Two Way Talk



Easy Mobile Remote Access



4MP Image Quality



IR Night Vision



Privacy Cover



Local ( Up to 256GB ) / Cloud Storage



PTZ Control



Preset Position



Motion Detection



2.4GHz / 5GHz Wi-fi

# NVR (NETWORK VIDEO RECORDER)

## LIGHT SERIES NVR



### SY-9NVR-1H-4K

9CH 4K NVR Embedded LINUX , Incoming/Outgoing Bandwidth 80/80 Mbps, 4k Display Resolution:3840x2160 1920x1080 1280x1024 1280x720 1024x768, Recording 4k(3840×2160),5MP(2592×1944),4MP(2688×1520/2560×1440),3MP(2048×1536),1080P(1920×1080),960P(1280x960),720P(1280×720),D1 (720×576/720×480),1 SATA Interface Capacity 1 SATA Hard Disk (2.5"/3.5" SATA, Up to 8TB) ,Support Web Browser Edge,IE8-11, Google Chrome , Firefox ,Safari.



### SY-16NVR-1H-4K

16CH 4K NVR Embedded LINUX , Incoming/Outgoing Bandwidth 120/120 Mbps, 4k Display Resolution:3840x2160 1920x1080 1280x1024 1280x720 1024x768, Recording 4k(3840×2160),5MP(2592×1944),4MP(2688×1520/2560×1440),3MP(2048×1536),1080P(1920×1080),960P(1280x960),720P(1280×720),D1 (720×576/720×480),1 SATA Interface Capacity 1 SATA Hard Disk (2.5"/3.5" SATA, Up to 8TB) ,Support Web Browser Edge,IE8-11, Google Chrome , Firefox ,Safari.



### SY-32NVR-2H-4K

32CH 4K NVR Embedded LINUX , Incoming/Outgoing Bandwidth 320/256 Mbps, 4k Display Resolution:3840x2160 1920x1080 1280x1024 1280x720 1024x768, Recording 4k(3840×2160),5MP(2592×1944),4MP(2688×1520/2560×1440),3MP(2048×1536),1080P(1920×1080),960P(1280x960),720P(1280×720),D1 (720×576/720×480),2 SATA Interface Capacity 1 SATA Hard Disk (2.5"/3.5" SATA, Up to 8TB) ,Support Web Browser Edge,IE8-11, Google Chrome , Firefox ,Safari

## PROJECT SERIES NVR



### SY-16NVR-2H

16CH 4K NVR: OS Embedded Linux  
Standard : H.265, H.264,  
12MP/8MP/5MP/4MP/3MP/ 1080P/960P/  
720P@25/30fps, Dual stream recording, SATA×2,  
up to 8TB per HDD,  
Mobile Device iOS,Android.



### SY-32NVR-4H

32CH 4K NVR: OS Embedded Linux  
Standard H.265, H.264,12MP/ 8MP / 6MP / 5MP /  
4MP / 3MP / 1080P / 1280 × 1024 / 960P / 720P /  
960H / D1 /CIF,Dual stream recording,SATA × 4,  
up to 8TB per HDD, Mobile Device iOS, Android.



### SY-64NVR-8H

64CH 4K NVR: OS Embedded Linux  
Standard : H.265, H.264,12MP/ 8MP/ 6MP/ 5MP/  
4MP/3MP/1080P/1280×1024/960P/  
720P/960H/D1/CIF, Dual stream recording,  
SATA×8, up to 8TB per HDD, E-SATA×2, RAID0,  
RAID1, RAID5, RAID6, RAID10,  
Mobile Device iOS,Android.



### SY-32NVR-2H

32CH 4K NVR: OS Embedded Linux  
Standard : H.265, H.264,  
12MP/8MP/6MP/5MP/4MP/  
3MP/1080P/1280×1024 /960P/720P/960H/  
D1 /CIF@25 / 30fps,Dual stream recording,  
SATA × 2, up to 8TB per HDD, Mobile Device  
iOS, Android.

# LIGHT SERIES XVR (SMART VIDEO RECORDER)

## XVR (2K)



### SY-4XVR-1H-2K

4CH 2K XVR Embedded LINUX Analog/AHD/CVI/TVI 2.0/TVI 3.0/Network, 2k Display Resolution:1920 × 1080P/60Hz, 1280 × 1024/60Hz, 1280 × 720/60Hz,1024 × 768/60Hz, Recording  
5MP\_Lite(1296×1952),4MP\_Lite(1280×1440),3MP\_Lite(1024×1536),1080N(960×1080),720P(1280×720),960H(960×480), 1 SATA Interface Capacity 1 SATA Hard Disk (2.5"/3.5" SATA, Up to 8TB) ,Support Web Browser Edge,IE8-11.



### SY-8XVR-1H-2K

8CH 2K XVR Embedded LINUX Analog/AHD/CVI/TVI 2.0/TVI 3.0/Network, 2k Display Resolution:1920 × 1080P/60Hz, 1280 × 1024/60Hz, 1280 × 720/60Hz,1024 × 768/60Hz, Recording  
5MP\_Lite(1296×1952),4MP\_Lite(1280×1440),3MP\_Lite(1024×1536),1080N(960×1080),720P(1280×720),960H(960×480), 1 SATA Interface Capacity 1 SATA Hard Disk (2.5"/3.5" SATA, Up to 8TB) ,Support Web Browser Edge,IE8-11.



### SY-16XVR-1H-2K

16CH 2K XVR Embedded LINUX Analog/AHD/CVI/TVI 2.0/TVI 3.0/Network, 2k Display Resolution:1920 × 1080P/60Hz, 1280 × 1024/60Hz, 1280 × 720/60Hz,1024 × 768/60Hz, Recording  
5MP\_Lite(1296×1952),4MP\_Lite(1280×1440),3MP\_Lite(1024×1536), 1080N(960×1080),720P(1280×720),960H(960×480), 1 SATA Interface Capacity 1 SATA Hard Disk (2.5"/3.5" SATA, Up to 8TB) ,Support Web Browser Edge,IE8-11, Google Chrome , Firefox ,Safari.

## XVR(4K)



### SY-8XVR-1H-4K

8CH 4K XVR Embedded LINUX Analog/AHD/CVI/TVI 2.0/TVI 3.0/Network, 4k Display Resolution:3840x2160 1920x1080 1280x1024 1280x720 1024x768, Recording  
5MP(2592×1944),8MP\_LITE(1920×2160),5MP\_HALF(1296 ×1944),4MP(2560×1440),4MP\_HALF(1280×1440),3MP(2048 ×1536),3MP\_Lite(1024×1536),1080P(1920×1080),720P(1280 ×720),960H(960×480), 1 SATA Interface Capacity 1 SATA Hard Disk (2.5"/3.5" SATA, Up to 8TB) ,Support Web Browser Edge,IE8-11, Google Chrome , Firefox ,Safari.



### SY-16XVR-2H-4K

16CH 4K XVR Embedded LINUX Analog/AHD/CVI/TVI 2.0/TVI 3.0/Network, 4k Display Resolution:3840x2160 1920x1080 1280x1024 1280x720 1024x768, Recording  
5MP(2592×1944),8MP\_LITE(1920×2160),5MP\_HALF(1296 ×1944),4MP(2560×1440),4MP\_HALF(1280×1440),3MP(2048 ×1536),3MP\_Lite(1024×1536),1080P(1920×1080),720P(1280 ×720),960H(960×480), 2 SATA Interface 2 SATA Hard Disk (2.5"/3.5" SATA, Up to 16TB) ,Support Web Browser Edge,IE8-11, Google Chrome , Firefox ,Safari.

# Entrance Automation Systems



**TOLL/PARKING  
BARRIER**



**UHF/FASTAG  
READER**



**ACCESS  
CONTROL**



**ANPR  
CAMERA**



**TURNSTILE  
BARRIER**



**TICKET  
DISPENSER**

# ENTRANCE PRODUCT

## Toll Barrier



**SY-TB600**  
Toll Boom Barrier  
Motor : 24V DC Brushless Motor  
Opening Time : 0.6 Sec  
Powder Coated Steel, Rainproof Feature.

## Rapid Parking Boom Barrier



**SY-TB900**  
Toll/Parking Boom Barrier  
Motor : 24V DC Brushless Motor  
Opening Time : 0.9 Sec  
Powder Coated Steel, Rainproof Feature.

## Parking Boom Barrier



**SY-PB2500**  
Parking Boom Barrier  
Motor : 24V DC Brushless Motor  
Opening Time : 2.5 Sec  
Powder Coated Steel, Rainproof Feature.



**SY-PB3000**  
Parking Boom Barrier  
Motor : 24V DC Brushless Motor  
Opening Time : 3 Sec  
Powder Coated Steel, Rainproof Feature.



**SY-PB2800**  
Parking Boom Barrier  
Motor : 24V DC Brushless Motor  
Opening Time : 2.8 Sec  
Powder Coated Steel, Rainproof Feature.



**SY-PB6000**  
Parking Boom Barrier  
Motor : 24V DC Brushless Motor  
Opening Time : 6 Sec  
Powder Coated Steel, Rainproof Feature.



Flat Boom Arm



Round Boom Arm



Telescopic Boom Arm



Fence Boom Arm



# UHF/ACCESS CONTROLLER/RFID CARD

## UHF Reader

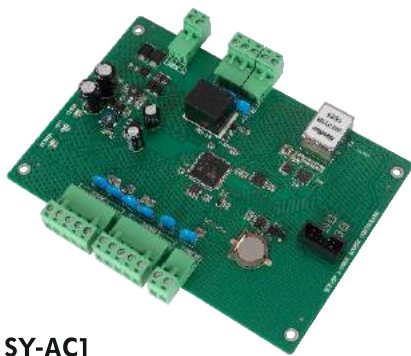


**SY-U900600 / SY-U900600-RJ**  
 Wiegand / RS232/TCP/IP  
 Frequency : 865~868MHz/902~928MHz  
 Range : 6Mtr\*

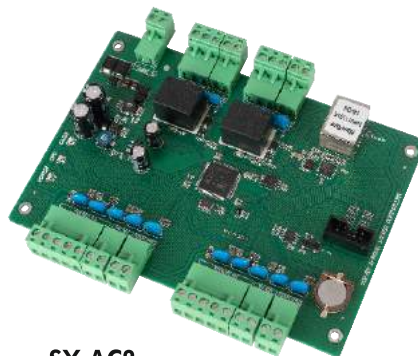


**SY-U15001200 / SY-U15001200-RJ**  
 Wiegand : RS232 / Rs232/TCP/IP  
 Frequency : 865~868MHz/902~928MHz  
 Range : 15Mtr\*

## Access Controller



**SY-AC1**  
 1 Door / 2 Reader  
 Communication : LAN  
 Register Cards : 42000  
 Record Capacity : 200000



**SY-AC2**  
 2 Door / 4 Reader  
 Communication : LAN  
 Register Cards : 42000  
 Record Capacity : 200000



**SY-AC4**  
 4 Door / 8 Reader  
 Communication : LAN  
 Register Cards : 42000  
 Record Capacity : 200000

## RFID Card



**SY-P10**  
 Proximity Thin Cards  
 Frequency : 125KHz



**SY-P10T**  
 Proximity Thick Cards  
 Frequency : 125KHz



**SY-M1K**  
 Mifare 1KB Thin Cards  
 Frequency : 13.56MHz



**SY-U20**  
 UHF Cards  
 860-960MHz



**SY-U-30T/SY-U30NT**  
 UHF Windshield Tags  
 Non Tearable  
 860-960 MHz

## Housing with Power Supply



**SY-H100**  
 Input : AC90V/260V60Hz  
 Output : DC11-14V, 5Amps+



**SY-H50**  
 Input : AC90V/260V60Hz  
 Output : DC11-14V, 5Amps+

# PARKING PRODUCT

## Parking Product



**SY-TD26**  
Automatic Ticket Dispenser  
Input Supply : 220V AC  
Communicate : TCP/IP  
Card Support : Mifare  
Reading range : 5-10 cm



**SY-US01**  
Ultrasonic Sensor  
Input Supply : 10V-24V DC  
Detection Mode : Ultrasonic Detection  
Detecting Distance : 0.3m to 4.5m



**SY-FD11**  
Display Unit  
Input Supply : 220V AC  
Display : 5mm Ultra Bright  
Communicate : RS 485  
Enclosure : MS Powder Coated.

## Tyre Killer



**SY-SB-6M**  
Length : 2M - 6M  
Opening Closing Time : 1 - 3 Seconds  
Height : 150mm  
Width : 500mm  
Power Supply : 230V-50Hz



**SY-BL-200**  
Dia of Bollard : 168mm + 2mm (Customized)  
Up and Down Time : 3-6 seconds (Can be adjusted)  
Power Supply : AC220C/380V, 50/60Hz  
Electrical Hydraulic System  
Communication Connection : Rs485  
Hydraulic Cylinder : HOB63-600CA+1 (Industrial Grade).

# ENTRANCE PRODUCT

## Flap Barrier



**SY-FBS-100**  
Single Side Flap Barrier with LED  
Housing Material : SUS 304 stainless steel outer body  
Direction : Single or bi-directional  
Indicators : LED for direction with arrow marks.



**SY-FBD-200**  
Dual Side Flap Barrier with LED  
Housing Material : SUS 304 stainless steel outer body  
Direction : Single or bi-directional  
Indicators : LED for direction with arrow marks.

## Turnstile Barrier

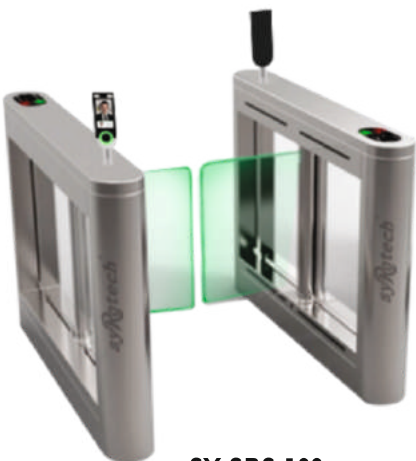


**SY-VT100**  
Vertical Turnstile  
House Material : SUS 304 stainless steel  
body & arms  
Direction : Single or bi-directional  
Indicators: LED for direction with arrow marks.



**SY-BT200-DS**  
Bridge Dual Side Transtile  
Housing Material : SUS 304 stainless steel  
outer body & arms  
Direction : Single or bi-directional  
Indicators : LED for direction with arrow marks.

## Swing Barrier



**SY-SBS-100**  
Single Side Swing Barrier with LED  
Housing Material : SUS 304 stainless steel outer body  
Direction : Single or bi-directional  
Indicators : LED for direction with arrow marks.



**SY-SBD-200**  
Dual Side Swing Barrier with LED  
Housing Material : SUS 304 stainless steel outer body  
Direction : Single or bi-directional  
Indicators : LED for direction with arrow marks.

# RESIDENCE ENTRANCE SOLUTION



# PARKING SOLUTION



# NETWORKING POE SWITCH

## UNMANAGED POE SWITCH



**SY-0400P-2T-65W**  
4\*10/100Mbps POE Port  
+2\*10/100Mbps Uplink Port,  
IEEE802.3af/at, 65W POE Power,  
Extend 250 Meters



**SY-4000P-2T-96W**  
4\*10/100/1000Mbps POE Port  
+2\*10/100/1000Mbps Uplink Port,  
af/at, 96W POE Power,  
Extend 250 Meters



**SY-8000P-2T-2S-150W**  
8\*10/100/1000Mbps POE Switch  
+2\*10/100/1000Mbps &  
2G SFP Uplink Port,  
Support af/at Standard,  
150W Extend 250 Meters



**SY-0800P-2G-120W**  
8\*10/100Mbps POE Switch  
+2GE Uplink  
Support af/at Standard,  
120W Extend 250 Meters



**SY-8000P-2T-150W**  
8\*10/100/1000Mbps POE Port  
+2\*10/100/1000Mbps Uplink Port,  
af/at, 150W POE Power,  
Extend 250 Meters



**SY-2400P-2T-2S-400W**  
24\*10/100/1000Mbps POE Port  
+2\*10/100/1000Mbps & 2GE SFP,  
Uplink Port, IEEE802.3af/at  
Standard, 320W POE Power  
Extend 250 Meters

## L2 MANAGED POE SWITCH



**SY-8000P-2T-120W-L2**  
8\*10/100/1000Mbps POE Port  
+2\*GE SFP Port, 1 Console Port,  
IEEE802.3af/at, 120W POE Power  
L2 Managed



**SY-8000P-2S-150W-L2**  
8\*10/100/1000Mbps POE Port  
+2\*GE SFP Port, 1 Console Port,  
IEEE802.3af/at, 150W POE Power  
L2 Managed



**SY-2400P-4S-400W-L2**  
24x10/100/1000Mbps POE Port  
+4xGigabit SFP port, 1 console port,  
Managed L2 Switch, af/at, 400W built-in power

## INDUSTRIAL POE SWITCH



**SY-4000P-2S-IND**  
POE 4 Port Industrial Switch, 4\*10/100/1000Mbps POE Port  
+2\*GE SFP Uplink Port, IEEE802.3af/at, L2 Managed  
Temp -40° +75° C



**SY-8000P-2S-IND**  
POE 8 Port Industrial Switch, 8\*10/100/1000Mbps POE Port  
+2\*GE SFP Uplink Port, IEEE802.3af/at, L2 Managed  
Temp -40° +75° C

## UNMANAGED SWITCH

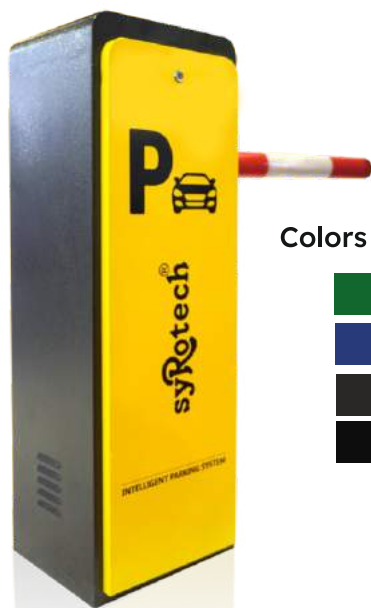


**SY-1005**  
5\*10/100/1000M  
auto-negotiation RJ45 ports  
(Auto MDI/MDIX)  
RJ45 ports (Auto MDI/MDIX)



**SY-1008**  
8\*10/100/1000M  
auto-negotiation RJ45 ports  
(Auto MDI/MDIX)  
RJ45 ports (Auto MDI/MDIX)

# TOLL MANAGEMENT SOLUTION



## Colors Available



### Remote control & Monitoring

This feature enables parking lot operators to manage multiple barriers from a single location, facilitating better control and coordination.

### Durable and weather-resistant

Parking boom barriers are built to withstand harsh environmental conditions, including exposure to sunlight, rain, snow, and temperature fluctuations.

### Customizable design and branding

Parking boom barriers can be customized with specific colors, logos, or branding elements to match the aesthetics and identity of the parking facility or business.

## Innovate. Protect. Secure.

We have expertise in design, development and manufacturing of FTTx, Datacom, Networking, and Security products.

# NETWORKING

## Media Converter

### 10/100 MEDIA CONVERTER



**GOMC-1303-20**  
10/100M SM Dual Fiber,  
1310nm, SC, 20Km



**GOMC-8503-02**  
10/100M MM Dual Fiber,  
850nm, SC, 2Km



**GOMC-BI3503-20**  
10/100M Bidi TX1310/RX1550, SC, 20Km

**GOMC-BI5303-20**  
10/100M Bidi TX1550/RX1310, SC, 20Km

### 10/100/1000 MEDIA CONVERTER



Dual Fiber,  
1310nm, SC, 20Km



**GOMC-8512-02**  
10/100/1000M MM  
Dual Fiber,  
850nm, SC, 2Km



**GOMC-BI3512-20**  
10/100/1000M SM Single Fiber,  
T1310/1550nm, SC, 20Km

**GOMC-BI5312-20**  
10/100/1000M SM Single Fiber,  
T1550/R1310nm, SC, 20Km

### 1000 SFP MEDIA CONVERTER



without SFP, External AC220V

# Wireless

## Access Point



### SY-AP-1200-ODAC

802.11AC MU-MIMO for high throughput Up to 1167 Mbps dual-band data rate 24V Passive PoE or IEEE 802.3af/at PoE power supply Max Range of up to 150 meters/ Outdoor Wi-Fi Access Point 2xRP-SMA Connectors.



### SY-AP-3000-AX (WiFi-6)

802.11AX Dual-Band Long Range Access Point Up to 3000 Mbps dual-band data rate 2.4 GHz band 2x2 MIMO with a radio rate of 574 Mbps 5 GHz band 2x2 MIMO with a radio rate of 2402 Mbps Power input with 802.3at PoE.



### SY-AP-1200-AC

802.11ac Dual-Band Access Point MU-MIMO for high throughput Up to 1167 Mbps dual-band data rate 24V Passive PoE or IEEE 802.3af/at PoE power supply Range of up to 150 meters.

## Wi-Fi Router



### SY-AX-1800 (WiFi-6)

2.4GHz: 300Mbps, 5GHz: 1201Mbps 5\*6dBi high-gain antennas MU-MIMO Parental Control.



### SY-1200-AC-PRO

2.4GHz: 300Mbps, 5GHz: 1201Mbps 5\*6dBi external antennas MU-MIMO Parental Control.



### SY-1200-AC

2.4GHz & 5GHz 4\*6dBi external dual band antennas Remote Web Management.

## Wi-Fi USB Dongle



### SY-USB-AX-EXT

Wi-Fi 6 Dual Band USB 3.0 Adapter, 2\*5dbi external antenna.

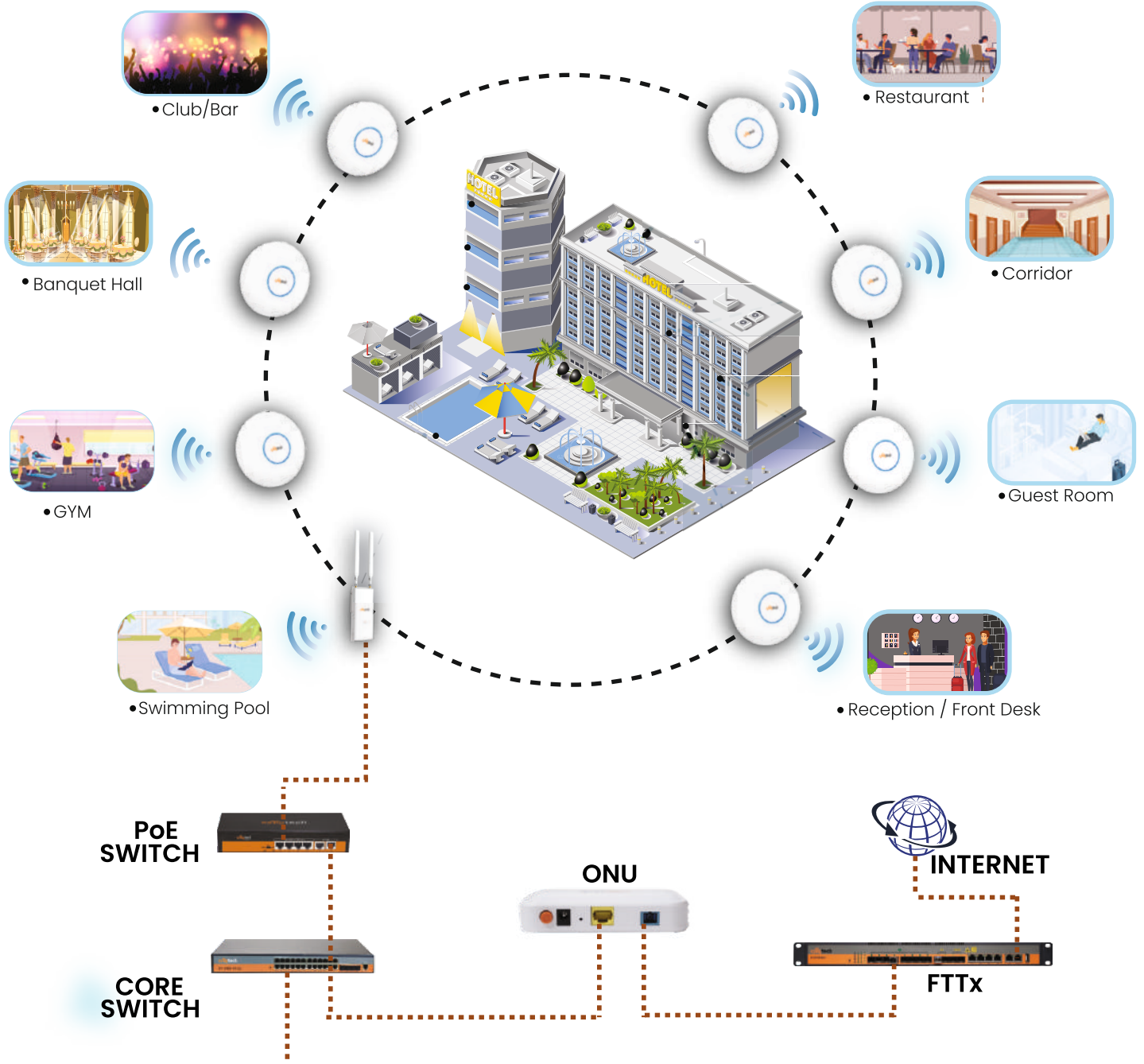


### SY-USB-AX

SY-USB-AX Wi-Fi 6 Dual Band USB 3.0 Adapter, internal antenna.



# Wi-Fi Solution



• Club/Bar



• Restaurant



• Banquet Hall



• Corridor



• GYM



• Guest Room



• Swimming Pool



• Reception / Front Desk

PoE SWITCH



ONU



INTERNET



CORE SWITCH



FTTX



AP Centralized Controller System



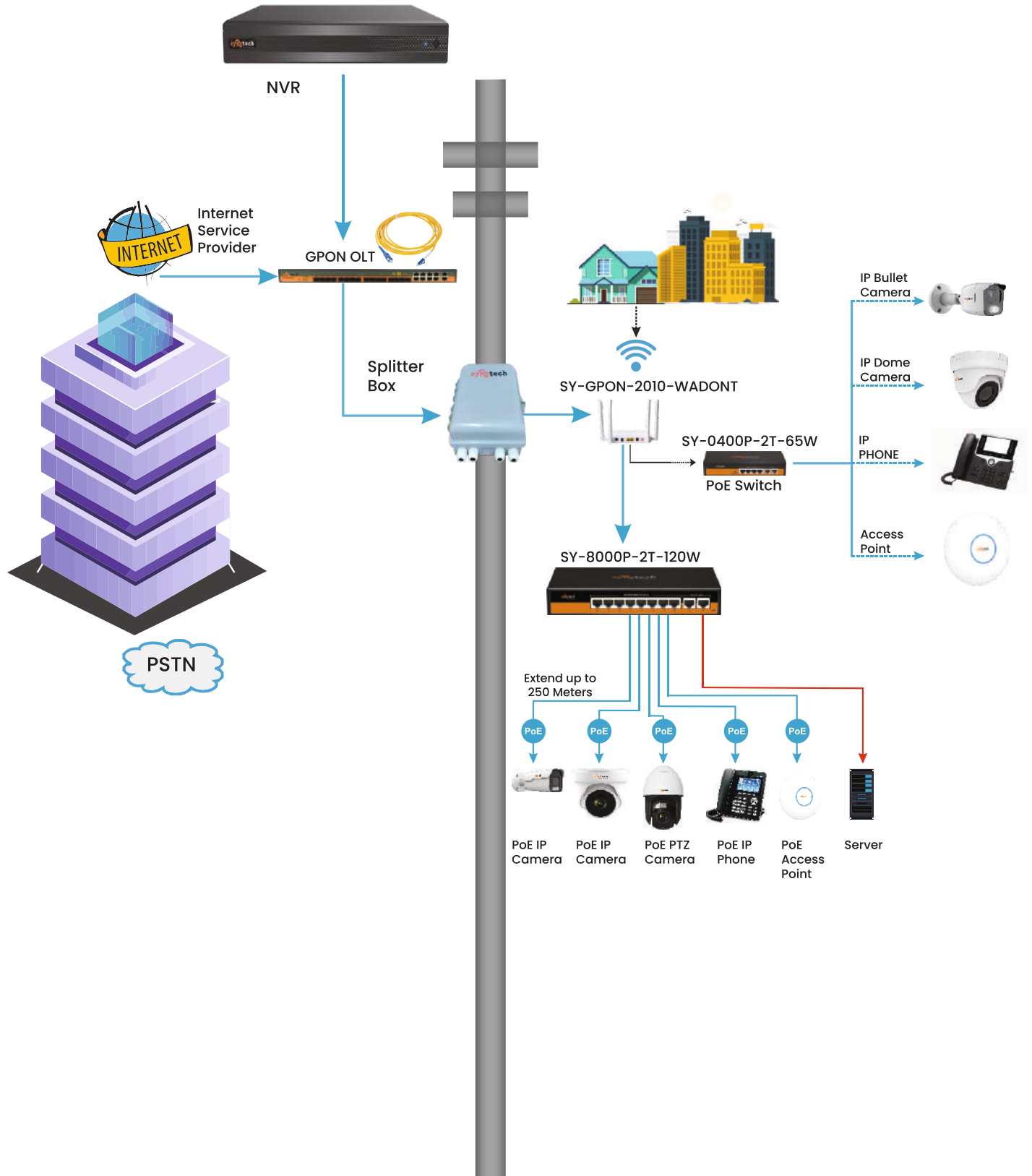
- 802.11AX Indoor Dual-Band Long Range Access Point.
- AP is designed based on the new Wi-Fi 6 Technology.
- Upto 3000Mbps Dual-Band Data rate (2.4, 5.0GHz).
- 3Gbps Wi-Fi, 2.5 Times Higher rate.
- More than 20% wider Wi-Fi coverage, Higher Capacity.
- Higher security, Intelligent roaming protocol.
- Power Input width 802.3at PoE.



- 802.11AC Outdoor Dual-Band Long Range Access Point.
- Concurrent dual band data rate upto 1167Mbps(2.4,5.0Ghz).
- MU-MIMO technology for higher throughput.
- Coverage radius upto 200 meters.
- Built-in RF for Intelligent Optimization
- Power Input width 802.3at PoE.
- Higher security, Intelligent roaming protocol.
- Durable IP 65 enclosure for outdoor Wi-Fi applications.



# CCTV and WI-FI Solution Over FTTX





## Access Point

Qualcomm chipset.

802.11ac/b/g/n,  
MIMO technology.

Wireless AP, Gateway,  
WISP, Wi-Fi Repeater WAN.

10/100/1000Mbps RJ45 WAN  
Port, WAN port support IEEE  
802.3 at standard PoE.



**SY-AP1200AC-OD**  
11AC 1200Mbps WAVE 2 Outdoor AP



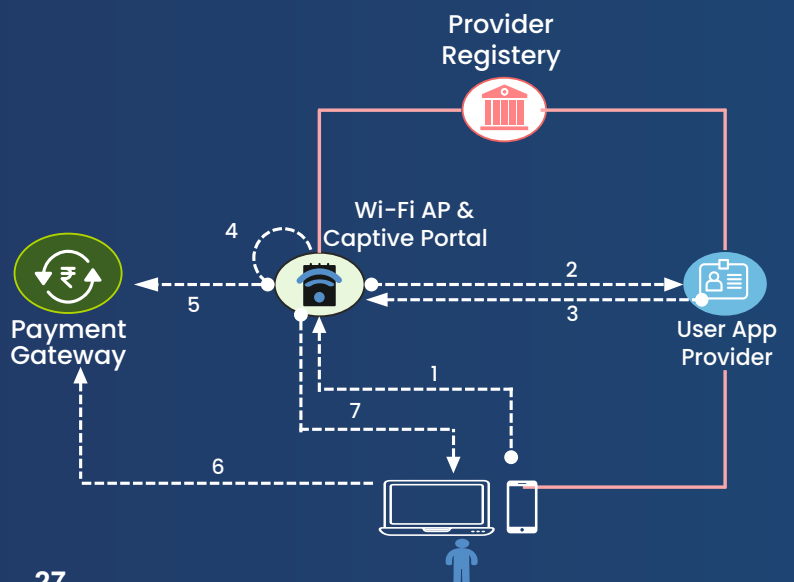
Increase broadband connectivity across India and further push internet adoption in rural areas.



Wi-fi networks to be enabled by Public Data Office Aggregators (PDOAs) to provide Wi-fi service through Public Data Offices (PDOAs).



Will help in proliferation of broadband internet, enhance income & employment for small and medium entrepreneurs and ease of doing business.



# Why Choose Syrotech?



GUARANTEED  
QUALITY



COMPETITIVE  
PRICE



FAST  
DELIVERY



UNIVERSAL  
COMPATIBILITY



INDUSTRIAL  
COMPLIANT



WIDE RANGE  
OF PRODUCTS



QUALITY  
CERTIFIED



DEPLOYED IN  
MAJOR NETWORKS

**syRotech**<sup>®</sup>  
NETWORKS

**GO IP Global Services Pvt. Ltd.**

Location : H-68, Sector-63, Noida-201307 (UP), India

Mail : [info@syrotech.com](mailto:info@syrotech.com)

Website : [www.syrotech.com](http://www.syrotech.com)

Toll Free : 1800-21200-6122